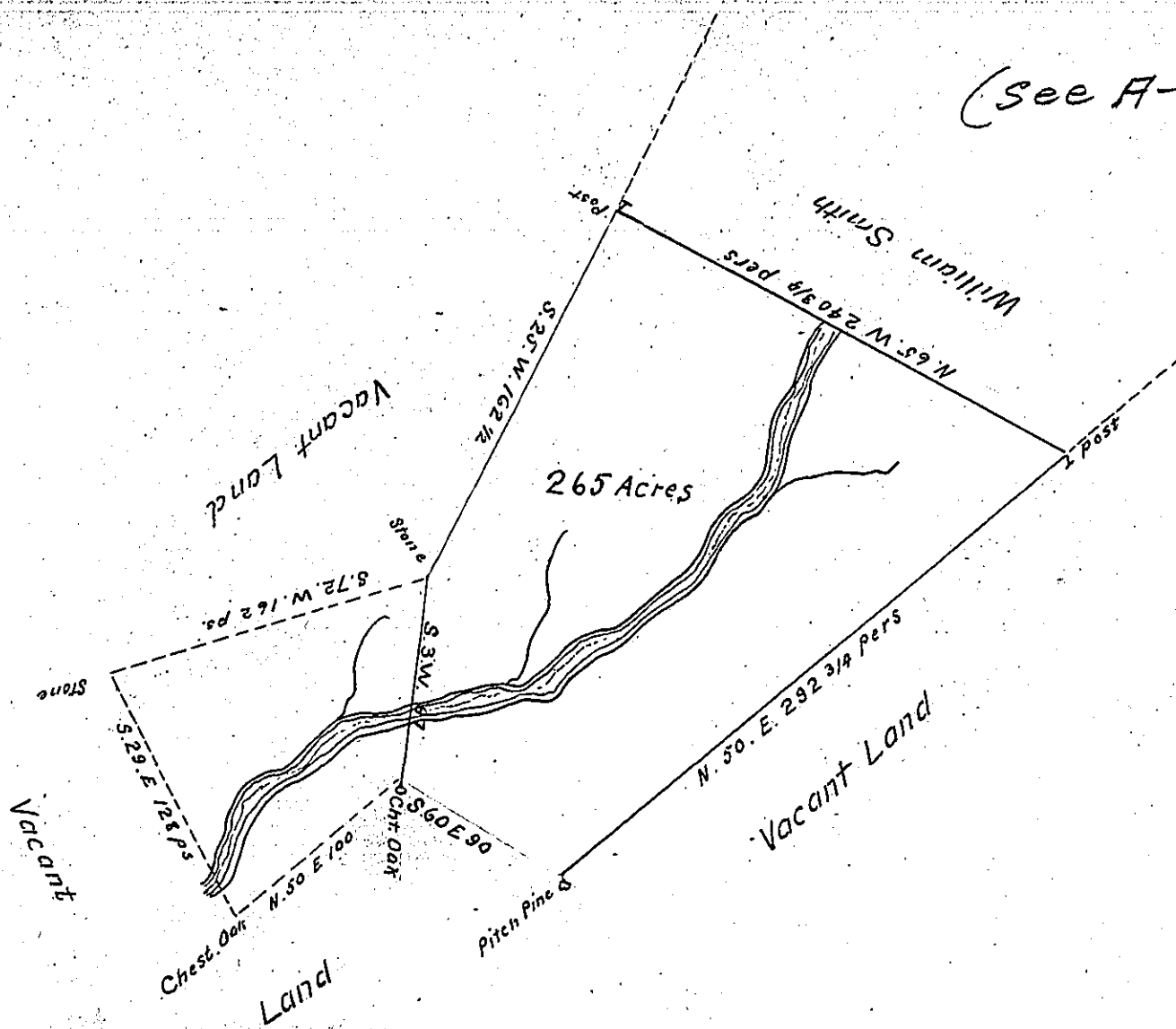


(see A-3-242)



A DRAFT of a tract of land situated in the Township of Lehman and County of Pike, containing two hundred and sixty five acres. — perches and allowance of six per cent for drafted roads, etc. Surveyed for John S. Schoon over the first day of April 1901, it being part of a larger tract containing three hundred and forty eight acres and fifty four perches and allowance originally surveyed in pursuance of a warrant granted to the Reverend Thomas Barton dated the twentieth day of July 1765.

To James W. Latta, Esq.,

J. Sutton Wall

Secretary of Internal Affairs.

Chief Draftsman of Department of Internal Affairs

County Surveyor.

Note — When this form is used the County Surveyor should indicate by dotted lines the remainder of the original survey, thus showing the location of the part returned. See paragraph nine of instructions to County Surveyors.

IN TESTIMONY that the above is a copy of the original remaining on file in the Department of Internal Affairs of Pennsylvania, made conformably to an Act of Assembly approved the 16th day of February, 1833, I have hereunto set my Hand and caused the Seal of said Department to be affixed at Harrisburg, this fourth day of March 1904.

James W. Latta
Secretary of Internal Affairs.